

Talks, events and workshops



Northern Print Biennale offers many opportunities to find out more about printmaking or even have a go yourself. There is a full programme of talks, events, activities, demonstrations and workshops taking place across NewcastleGateshead. There are activities for all the family as well as a programme of daytime and evening talks including Print 09 Symposium at Newcastle University which will discuss the relationship between artist, publisher and collector. A schools education programme will run from September onwards. For more information about all the events and booking details please go to www.northernprint.org.uk/biennale for the full programme or www.twmuseums.org.uk for family activities and talks at Hatton Gallery; Laing Art Gallery; Discovery Museum and Shipley Art Gallery.



More about Northern Print

Northern Print is an open access print studio and gallery in Ouseburn Valley close to Newcastle city centre. Join the studio to make original prints. Learn how to make prints in one of our classes. Spend some time in the gallery – on Fridays and Saturdays you can enjoy free coffee. Bring the whole family – we have a collection of printing stamps and inks to keep younger artists busy. Northern Print is a place for learning about printmaking. We have activities for schools, colleges and community groups. We'll be running our regular programme of printmaking classes and courses throughout the summer and beyond. For further information about our summer programme go to www.northernprint.org.uk or call 0191 261 7000 Northern Print supports artists and is not for profit. Tuesday to Saturday 12 noon to 4pm Northern Print, Stepney Bank, Newcastle Upon Tyne, NE1 2NP enquiry@northernprint.org.uk



Passport to Print with Imi Maufe

Open your eyes to print around NewcastleGateshead by following Imi Maufe's specially commissioned map for 'Print City'. Download it from the website and use it to visit the main events, as well as finding hidden locations for print around the city. Imi's map is a limited edition screenprint and available from Northern Print. For further information and to download your own 'Passport to Print' go to www.northernprint.org.uk/biennale



Win an original artwork

Passport to Print created and signed by Imi Maufe To enter our free prize draw to win this highly collectable specially commissioned artwork go to www.northernprint.org.uk/biennale or complete one of our entry forms which are available at Northern Print, Laing Art Gallery or Hatton Gallery. Or go to www.NewcastleGateshead.com to receive further information No purchase necessary. No cash alternative. One entry per person. Closing date 4 October 2009. One winner will be informed and receive their prize by post by 30 October 2009.

Part of NewcastleGateshead's world class programme of festivals and events developed by culture¹⁰.

This exhibition has been made possible by the generous support of:



Thanks to our generous prize givers:



International Printmaking Exhibitions and Events
Free entry | June – October 2009



Welcome to Print City

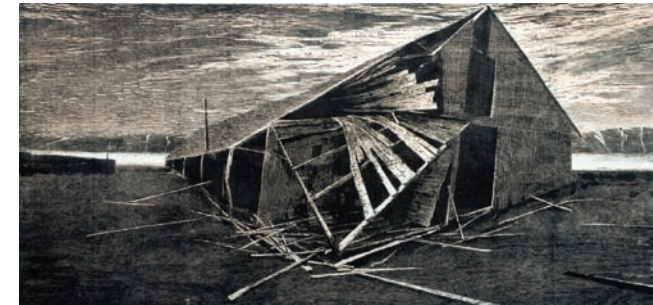
Home of the Northern Print Biennale which celebrates contemporary printmaking at 15 venues across NewcastleGateshead from June to October 2009



Northern Print Biennale Print Awards 2009

Northern Print 26 June to 4 October 2009
Open: Wednesday to Saturday 12 noon – 4pm
Hatton Gallery 26 June to 15 August 2009
Open: Monday to Saturday 10am – 5pm
Laing Art Gallery 4 July to 4 October 2009
Open: Monday – Saturday 10am – 5pm, Sunday 2pm – 5pm

The first major competition and exhibition of contemporary printmaking in the UK for almost 20 years. The exhibition, jointly hosted by Northern Print, Hatton Gallery and Laing Art Gallery, will showcase the very best in new British and international printmaking attracting a broad range of artists whose work encounters print.



Peter Abrahams • Susan Aldworth • Debora Ando • Gillian Ayres
Marc Balakjian • Curtis Bartone • Derek Besant • Marko Blazo
Louise Bourgeois • Siân Bowen • Boyd & Evans • Adam Bridgland
Alex Calinescu • Cordelia Cembrowicz • Rebecca Chalmers • Alex Charrington
Mary Christiansen • Rachael Clewlow • Paul Coldwell • Liz Collini
Michael Craig-Martin • Amanda Danicic • Ian Davenport • Jeffrey Dennis
Jim Dine • Grazyna Dobrzelecka • Lauren Bibi Drescher • Katarzyna Dziuba
Jill Evans • Anna Fairchild • Alec Finlay • James Fisher • Helen Flanagan
Tim Freeman • J & M Grant • Deborah Grice • Oona Grimes • Rachel Gross
Graham Guy-Robinson • Beatrice Haines • Richard Hamilton • Tom Hammick
Barton Hargreaves • Eleanor Havsteen-Franklin • Kendal Heyes
Clyde Hopkins • Christopher Humphreys • David Jacques • Katherine Jones
Steffan Jones-Hughes • Linda Jules • Elizabeth Klimmek • John Lavell
Simon Lawson • Anthony Lazorko • Ben Leenen • Tim Long • Ian McKeever
Brian McKenzie • John McLean • Elizabeth Magill • Eriko Maki
Alexander Massouras • Imi Maufe • Glynis Mills • Mikhak Mimahmoudi
Nick Mobbs • David Osbaldeston • Mimmo Paladino • Yi Peng • Bill Penney
Susan Pye • Dan Rizzie • Judith Rothchild • Nana Shiomi • Yinka Shonibare
Bronwen Sleigh • Lori Solondz • Emma Stibben • Trevor Sutton • Farah Syed
Finlay Taylor • Joe Tilson • John Utting • Daryl Waller • Mary Webb
Brigitte Williams • Sarah Woodfine • Richard Woods • Wenhai Zhang





List of venues			Artist credits:
1 Northern Print	7 Shipley Art Gallery		Laing Art Gallery, Photographer: Keith Pattison, Thomas Bewick Tail-piece for the Long-legged Plover
2 Hatton Gallery	8 Waygood Art Boutique		Julian Meredith
3 Laing Art Gallery	9 Mushroom Works		Baltic, Seripop
4 Discovery Museum	10 Gallagher and Turner		Vane, Artist: Jörn Ebner (top image) Title: Cityscape 009, Artist: David Shrigley (bottom image) Title: 6 X's
5 BALTIC Centre for Contemporary Art	11 Designed & Made		Shipley Art Gallery, Official poster for London Olympic Games, 1948, Walter Herz © Courtesy IOC / Victoria and Albert Museum
6 Vane	12 The Biscuit Factory		Waygood Art Boutique, Maria Helena Magalhães – Public/Private complexities, Installation detail
	13 Byker Metro Station		Gallagher and Turner, Anita Klein – The Red Shoes
			Designed & Made, Kathryn Hodgkinson – detail
			Biscuit Factory, Veta Gorner – Dark Waters
			Front cover image: Artist: Katherine Jones, The Propagation of Sound
			Welcome to Print City images: Elizabeth Klimak – Solid V, Ian Davenport – Etched Lines: Thirty Five, Emma Stibborn – Abandoned Whaling Station Deception Island, Rachel Gross – Reign
			Photographers: Dan Brady, Keith Pattison and Adam Lawrenson

Mushroom Works | PRINT



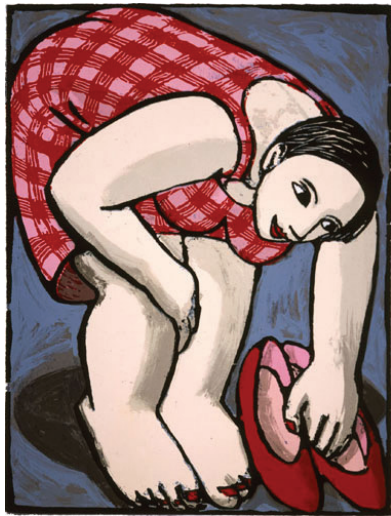
6 – 26 September 2009
Preview evening Friday 5th September

Open: Wednesday – Saturday, 12 noon – 5pm

PRINT brings together two exciting new shows, one featuring the early work of Master Printer Lee Turner of Hole Editions and the other which looks at the work of artists who have been inspired by or incorporate unusual images of the North East within their work.

Mushroom Works Studios and Gallery, St Lawrence Road, Newcastle upon Tyne NE6 1AR
Tel: 0191 224 4011
Email: lara@mushroomworks.com
Web: www.mushroomworks.com

Gallagher & Turner | London Calling



4 July – 18 August and 2 September – 2 October 2009
Open: Tuesday – Friday 10am – 6pm, Saturdays 10am – 3pm

In collaboration with Advanced Graphics London whose silkscreens we have exhibited for a decade. Working for over forty years, the development of woodblocking techniques combined with heavily screenprinted layers have become a trademark of Advanced.

Craigie Aitchison, Basil Beattie, Fred Cuming, Albert Irvin, Anita Klein and Ray Richardson show how diversely successful collaborative work with print technicians can be.

Gallagher & Turner, St Thomas Street Workshops, St Thomas Street, Newcastle upon Tyne NE1 4LE
Tel: 0191 261 4465 Web: www.gallagherandturner.co.uk

Laing Art Gallery | Thomas Bewick: Tale-Pieces

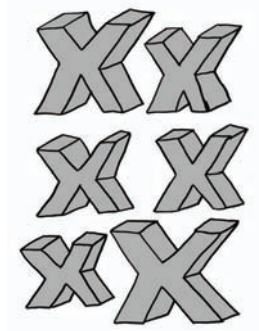


4 July – 18 October 2009
Open: Monday to Saturday 10am – 5pm, Sunday 2pm – 5pm

Engravings by the North East born artist Thomas Bewick. The exhibition focuses on his 'tail-pieces' – small illustrations for a number of 18th century publications. These are complemented by some of Bewick's woodblocks and more prints from the Laing's collection.

Laing Art Gallery, New Bridge Street, Newcastle upon Tyne NE1 8AG
Tel: 0191 232 7734 Web: www.twmuseums.org.uk/laing/

Vane



'A room inside them' 2 July – 1 August 2009
Open: Wednesday – Saturday, 12 noon – 5pm

An exhibition bringing together a diversity of artists' approaches to – and uses of – printmaking and its different techniques. Featured artists come from the UK, USA, Germany, and Denmark and include: Paul Becker, Claire Davies, Kerstin Drechsel, Jörn Ebner, Nadia Hebson, Andrew McDonald, Jock Mooney, Stephen Palmer, Josué Pellot, Morten Schelde, and Alison Unsworth.

'Kiss of a Lifetime' 6 – 22 August 2009
Open: Wednesday – Saturday, 12 noon – 5pm

Curated by Manchester-based artist and curator, Mike Chavez-Dawson, 'Kiss of a Lifetime' is a limited edition print exhibition featuring the work of 100 artists, both internationally renowned and emerging, from the UK and abroad. The exhibition examines what 'the kiss' signifies within contemporary culture – from the romantic to the lifesaving, from the prosaic to the violent.

Vane, Kings House, FORTH BANKS, Newcastle upon Tyne NE1 3PA
Tel: 0191 261 8281 Email: info@vane.org.uk
Web: www.vane.org.uk

Designed & Made | Print + Architecture



25 July – 20 September 2009
Open: Wednesday – Saturday 12.30pm – 6.00pm

Preview 24th July 6pm – 9pm

The Designed & Made gallery are proud to present 'Print + Architecture'. The exhibition will reveal the creative process behind working with screen-printed architectural glass. Kathryn Hodgkinson will show glass samples and models from various large-scale projects. The work on display will include her most recent commissions for Newcastle city library and the RIBA award- winning building in Sunnyside.

Bridget Jones will exhibit some of the sketchbooks, prints and samples that are an integral part of her making process. This will include work from her large-scale screen-printed glass commission for Saltwell Towers in Gateshead.

There will also be a range of new print based products for sale in the Designed & Made shop. The work featured will use print in various ways including Kathryn Hodgkinson's range of transfer printed china.

Designed & Made Gallery, Level 1, Live Theatre, Broad Chare Quayside, Newcastle upon Tyne NE1 3DQ
Tel: 0191 229 2398 Email: info@designedandmade.co.uk
Web: www.designedandmade.co.uk

Discovery Museum | Julian Meredith



27 July – 28 August 2009
Mondays, Wednesdays and Fridays
Drop-in activity from 10.30am – 12.30pm & 2pm – 4pm

Discovery Museum's Great Hall will be taken over by print this summer as artist Julian Meredith invites visitors to help create a large-scale artwork. A shoal of printed fish will grow throughout the summer, reflecting the River Tyne and fishing industries of the region. The artist will also create a large image of a Blue Whale printed onto elm wood, and visitors can watch the entire printing process.

Discovery Museum, Blandford Square, Newcastle upon Tyne NE1 4JA
Tel: 0191 232 6789 Web: www.twmuseums.org.uk/discovery

Shipley Art Gallery | A Century of Olympic Posters



13 June – 23 August 2009
Open: Monday to Saturday, 10am – 5pm
Sunday 2pm – 5pm

This vibrant exhibition, on tour from the V&A Museum, London, will explore the representation of the Olympic Games through the intensely visual medium of the poster. Marking the Beijing Olympic Games of 2008 and the build-up to London 2012, exhibits will be drawn from the V&A's rich collections of posters and ephemera, including stunning recent acquisitions.

For more information and details of our programme of printmaking activities for families go to www.twmuseums.org.uk/shipley

Shipley Art Gallery, Prince Consort Road, Gateshead NE8 4JB
Tel: 0191 4771495 Web: www.twmuseums.org.uk/shipley

The Biscuit Factory | Printed



13 June – 31 August 2009
Open: Tuesday – Saturday 10am – 8pm
Sunday and Monday 11am – 5pm

An exhibition celebrating contemporary printmaking.

Artists explore diverse subject matters and utilise a variety of techniques

from silk screen to aquatint and monoprint on to ceramic. Exhibiting artists: Emiko Aida, Jane Bristowe, Joanne Campbell, Hester Cox, Veta Gorner, Gail Mason and Philomena Pretsell.

Artists' talks 2 July, 16 July, 13 August, please contact The Biscuit Factory for more information.

The Biscuit Factory, 16 Stoddard Street, Newcastle upon Tyne NE2 1AN
Tel: 0191 261 1103 Email: art@thebiscuitfactory.com
Web: www.thebiscuitfactory.com

BALTIC Centre for Contemporary Art | Seripop



Seripop are two Canadian artists driven by an underground music scene. They create posters and artwork for their own band AIDS Wolf and other musicians, who experiment with surrealist and psychedelic imagery. They are some of the most well-known and influential artists and illustrators working in this scene.

On the evening of **Friday 31 July and Saturday 1 August** BALTIC's performance space will be transformed

by Seripop into an installation of screen prints, creating a unique environment for two performance nights featuring ten bands including Les Cox (sportifs) and Hamborhinni. The installation will be open to visitors to BALTIC on Saturday and Sunday.

Tickets for both nights available from BALTIC shop or www.wegotickets.com

Screenprinting Workshop There will be a basic screen printing workshop held at Northern Print on Monday 3 August 2009 from 10am – 4pm

Price is £10 per person and it is suitable for age 16+

Artist Talk Seripop will present a free talk at BALTIC on Tuesday 4 August 2009 from 6.15pm

Pre-booking is essential for both events. Please call BALTIC on 0191 478 1810 or e-mail events@balticmill.com to reserve places. www.balticmill.com/seripop

BALTIC Centre for Contemporary Art, Gateshead Quays South Shore Road Gateshead NE8 3BA

Waygood Art Boutique | Fresh Eyes



Maria Helena Magalhães
27 June – 18 July 2009
Preview: 2pm – 4pm
Saturday 4 July 2009

Nicky Courtts & Liz Murray
25 July – 22 August 2009
Preview: 2pm – 4pm
Saturday 25 July 2009

Heather Allen, 29 August – 26 September 2009
Preview: 2pm – 4pm Saturday 29 August 2009

Open Wednesday – Saturday 12 noon – 5pm
Three exhibitions of new work by four women artists who link space, public or private, architectural or domestic, with their personal practice.

Fresh Eyes is the final project at Waygood Art Boutique before it is included in the transformation into Waygood's spectacular new venue for contemporary visual art and artists.

An artist's discussion and a specially commissioned print will accompany each exhibition.

Waygood Art Boutique, 31 High Bridge, Newcastle upon Tyne NE1 1EW
Tel: 0191 265 6857 Email: boutique@waygood.org
Web: www.waygood.org

Byker Metro Station | Nexus Commission Prize



Find out more about art on Metro
4 July to 4 October 2009
Nexus, which owns the Tyne and Wear Metro is taking print out of the gallery and into the city by launching this new commission prize.

As part of the 2009 Print Awards, Nexus will commission one artist from the Northern Print Biennale shortlist to produce a new 10 metre print for the art wall at Byker Metro Station. The winning artist will be announced on 3 July.

Byker Metro is two stops from Monument station and 10 minutes walk from the Ouseburn Valley and Northern Print.

Find out more about art on Metro at
Web: www.nexus.org.uk/artontransport